



BISSETT
PROFESSIONAL PRODUCTS

Net Wt. 40 Lbs. (18.1 kg)
Covers up to 10,000 sq. ft.

Broadleaf Weed Control Plus Fertilizer 22-3-10 with TRIMEC[®] Herbicide

ACTIVE INGREDIENTS:

*2,4-Dichlorophenoxyacetic acid	0.456%
**2-(2-methyl-4-chlorophenoxy) propionic acid	0.204%
***Dicamba: 3,6-dichloro-o-anisic acid	0.043%
INERT INGREDIENTS:	99.297%
Total	100.000%

This product contains:

- *9.117 lbs. 2,4-Dichlorophenoxyacetic acid equivalent per ton.
- **4.081 lbs. 2-(2-methyl-4-chlorophenoxy) propionic acid equivalent per ton.
- *** 0.861 lb. 3,6-dichloro-o-anisic acid equivalent per ton.

Isomer Specific by AOAC Methods.

TRIMEC is a registered trademark of PBI/GORDON CORPORATION

EPA Reg. No. 2217-801-66587 EPA Est. No. 9198-OH-1M, 9198-OH-2B,
9198-AL-001-A
Underlined letter is first letter used in run code on bag.

GUARANTEED ANALYSIS:

Total Nitrogen(N)	22.00%
1.77% Ammoniacal Nitrogen	
20.83% Urea Nitrogen*	
Available Phosphate(P ₂ O ₅)	3.00%
Soluble Potash(K ₂ O)	10.00%
Total Sulfur (S)	1.70%
1.7% Free Sulfur (S)	

Plant nutrients derived from ammonium phosphate, urea, muriate of potash and polymer coated sulfur coated urea.

*4.4% Slowly Available Urea Nitrogen from Polymer Coated Sulfur Coated Urea.

STOP! READ THE ENTIRE LABEL FIRST. OBSERVE ALL PRECAUTIONS AND FOLLOW DIRECTIONS CAREFULLY.

KEEP OUT OF REACH OF CHILDREN CAUTION

PRECAUTIONARY STATEMENTS

Hazards to Humans & Domestic Animals: CAUTION: Harmful if swallowed. Do not inhale dust. Do not allow contact with skin, eyes or clothing. When using this product, wear long-sleeved shirt, long pants, gloves, socks and shoes. After using this product, remove clothing and launder separately before reuse, and promptly and thoroughly wash hands and exposed skin with soap and water.

Environmental Hazards: Drift or runoff may adversely affect nontarget plants. Do not apply directly to water, to areas where surface water is present or to intertidal areas below the mean high water mark. Do not contaminate water when disposing of equipment washwaters. When cleaning equipment, do not pour the washwater on the ground; spray or drain over a large area away from wells and other water sources. Do not apply when weather conditions favor drift from target area.

Most cases of groundwater contamination involving phenoxy herbicides such as MCP and 2,4-D have been associated with mixing/loading and disposal sites. Caution should be exercised when handling MCP and 2,4-D pesticides at such sites to prevent contamination of groundwater supplies. Use of closed systems for mixing and transferring this pesticide will reduce the probability of spills. Placement of the mixing/loading equipment on an impervious pad to contain spills will help prevent groundwater contamination.

STATEMENT OF PRACTICAL TREATMENT

IF ON SKIN: Wash skin with plenty of soap and water.

IF IN EYES: Flush with water for 15 minutes and get medical attention.

DIRECTIONS FOR USE

It is a violation of Federal law to use this product in a manner inconsistent with its labeling. Do not allow people (other than applicator) or pets on treatment area during application. Do not enter treatment areas until spray has dried or dust has settled. For use on ornamental lawns and turf established in institutional, ornamental and residential sites. Not for use on turf being grown for sale or other commercial use as sod, or for commercial seed production, or for research purposes.

STORAGE & DISPOSAL

Do not contaminate water, food, or feed by storage or disposal. **STORAGE:** Store in original container and keep any bags containing unused product in a locked storage area inaccessible to children and domestic animals. **PESTICIDE DISPOSAL:** Pesticide wastes are toxic. Improper disposal of excess pesticide, spray mixture, or rinsate is a violation of Federal Law and may contaminate groundwater. If these wastes cannot be disposed of by use according to label instructions, contact your State Pesticide or Environmental Control Agency, or the Hazardous Waste representative at the nearest EPA Regional Office for guidance. **CONTAINER DISPOSAL:** Completely empty bag into application equipment. Then dispose of empty bag in a sanitary landfill or by incineration or, if allowed by state and local authorities, by burning. If burned, stay out of smoke.

WHERE TO USE

Bissett Professional Products Broadleaf Weed Control Plus Fertilizer 22-3-10 is a Trimec[®] brand herbicide containing fertilizer, 2,4-D, mecoprop, and dicamba. This granular weed and feed provides plant nutrients and controls a broad spectrum of broadleaf weeds in turfgrass. Supplemental nitrogen, phosphorus, and potash should be applied according to soil tests or State Extension Service recommendations.

This product is intended to be applied by commercial applicators, non-commercial users, lawn care operators, and landscape personnel. Cool season and warm season grasses established in institutional, ornamental, and residential sites may be treated.

Institutional sites are defined as turf areas around properties or facilities providing a service to public or private organizations; for example areas around hospitals, nursing homes, schools, museums, libraries, sport facilities (including golf courses) and office buildings may be treated. Ornamental sites include turfgrass established around residences, parks, streets, retail outlets, cemeteries, and institutional buildings. Finally, residential sites are defined as areas associated with the household or home life including, but not limited to apartment complexes, condominiums, and patient care areas of nursing homes, mental institutions, hospitals, or convalescent homes.

This product may be applied to newly seeded cool season turfgrass. Applications are recommended only after the third mowing or after the grass seedlings have tillered and have developed an adequate secondary root system.

This product may be applied to newly established warm season turfgrass. Treatments should be delayed until 3-4 weeks after the sodding, sprigging, or plugging operations, and low application rates (1/2 of the recommendation for established turfgrass) are suggested.

A uniform broadcast distribution of product on the treated area is essential. Do not exceed the specified application rate for any area and use care in the application of this product within the dripline of trees, shrubs, and other ornamentals.

Do not use this product on St. Augustinegrass, dichondra, carpetgrass, closely-mowed bentgrass putting greens, or turf containing desirable clovers.

WEEDS CONTROLLED

Dandelion, chickweed, plantains, and clover are controlled effectively with Bissett Professional Products Broadleaf Weed Control Plus Fertilizer 22-3-10. A partial list of susceptible weeds is shown below:

Bedstraw	Dock	Pigweed
Black Medic	Ground Ivy	Plantains
Buckhorn	Healall	Purslane
Burdock	Henbit	Ragweed
Chicory	Knotweed	Sheep Sorrel
Chickweed	Lambsquarter	Shepherdspurse
Clover	Morningglory	Speedwell
Dandelion	Peppergrass	Thistle

HOW MUCH TO APPLY

FOR KENTUCKY BLUEGRASS, FESCUE spp., PERENNIAL RYEGRASS, BERMUDAGRASS, AND ZOYSIAGRASS:

Apply 174.2 lbs. of this product per acre of established turfgrass. Or, the equivalent application rate is 4.0 pounds of product per 1,000 sq. ft. of turfgrass. The maximum application rate to turf is 1.2 pounds 2,4-D acid equivalent per acre per application per site. The maximum number of broadcast applications per treatment site is 2 per year.

Sequential or follow-up applications may be required for dense infestations of perennial and biennial weeds. Also, adverse environmental conditions prior or after application may reduce the effectiveness. If required, the treatment interval between the first and second applications should be approximately 30 days.

Drop spreaders, rotary spreaders, and other granular equipment should be calibrated for accurate and uniform applications of this product. Calibrate the equipment by applying the product over a measured or known area and adjust the equipment according to the recommendations of the equipment manufacturer.

SPREADING HINTS

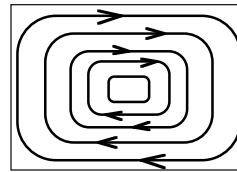
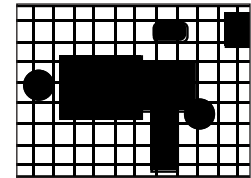
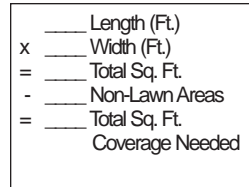
It is important to follow the directions as indicated on this quality lawn care product as over-application may cause injury to your lawn. Spreader settings are approximate. Differences may occur due to condition of spreader, speed at which applied and roughness of area treated. Refer to the table and picture below to determine the size of your lawn.

Close spreader hopper and adjust the spreader setting using the suggested spreader settings chart below. Fill spreader on driveway or sidewalk to eliminate the chance of spillage on the lawn. Refer to "Path A" when using a broadcast spreader and "Path B" when using a drop spreader. Close the spreader hopper whenever spreader stops or turns.

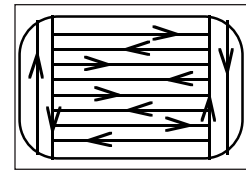
SUGGESTED SPREADER SETTINGS

4.0 Lbs. of Product/1,000 Sq. Ft.

Earthway 2400	17
LESCO	G
Prizelawn CB85	J
Scotts R8A	L 1/2
Spyker	4



Path A



Path B

Application Suggestions:

- 1) Spring and fall applications are recommended for the best control. However, this product can be applied any time broadleaf weeds are present and actively growing.
- 2) Mow the turfgrass 2 to 3 days before application.
- 3) Water the turfgrass thoroughly (at least 1/2 inch) at least 1 to 2 days before application.
- 4) Schedule applications in the morning when dew is present. Or, sprinkle or irrigate lightly (less than 1/4 inch) before application to provide maximum control.
- 5) Rainfall or irrigation within 24 hours after application may reduce the effectiveness. Do not irrigate or water the turfgrass within 24 hours after application.

WARRANTY DISCLAIMER and LIMITATION OF WARRANTY: Manufacturer warrants that this product conforms to the chemical description on the label and is reasonably fit for the purposes stated on the label when used in strict accordance with the directions. Manufacturer makes NO OTHER EXPRESS OR IMPLIED WARRANTY OF MERCHANTABILITY OR FITNESS FOR A PARTICULAR PURPOSE. Where permissible, it is Manufacturer's intent to LIMIT ANY LIABILITY FOR SPECIAL CONSEQUENTIAL OR INCIDENTAL ECONOMIC DAMAGES to refund of purchase price or replacement of product, at Buyer's choice. Manufacturer DISCLAIMS ANY LIABILITY FOR COMPENSATORY OR OTHER DAMAGES ARISING OUT OF ANY USE CONTRARY TO LABEL DIRECTIONS. Use contrary to label directions is not permitted.

BNS224WF4

Distributed by:
 BISSETT NURSERY, INC.
 323 Long Island Ave., Holtsville, NY 11742