



# Little Giant® Big John® Submersible Sump Pump

## OWNERS MANUAL

FOR

**6-CIM-R  
6-CIA-RFS  
8-CIM-R**

**CAUTION:**

**READ SAFETY GUIDELINES AND INSTRUCTIONS CAREFULLY**



AUTOMATIC PUMP

AUTOMATIC SWITCH  
ON LEVEL: 9" - 10½"  
OFF LEVEL: 2" - 3"

- \* ASSEMBLY
- \* INSTALLATION
- \* OPERATION
- \* REPAIR PARTS
- \* SAFETY



MANUAL PUMP

Little Giant pumps are carefully packaged, inspected and tested to insure safe operation and delivery. When you receive your pump, examine it carefully to determine that there are no broken or damaged parts that may have occurred during shipment. If damage has occurred, make notation and notify the firm you purchased the pump from. They will assist you in replacement or repair, if required.

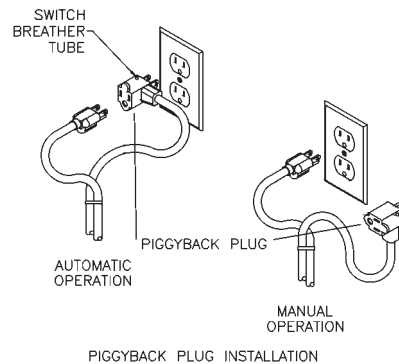
The motor section of your pump is permanently lubricated and sealed - do not attempt to open this section. Special equipment and knowledge is required for proper servicing of this part of your pump and may only be accomplished by an Authorized Service Center or the factory. Your warranty will be void if the motor section is opened by unauthorized persons.

## SAFETY GUIDELINES **WARNING**

1. **CAUTION: To reduce the risk of electrical shock, pull plug before servicing this pump.**
2. Read all instructions and safety guidelines thoroughly. Failure to follow the guidelines and the instructions could result in serious injury and/or property damage.
3. Check local electrical and building codes before installation. The installation must be in accordance with their regulations.
4. During normal operation the sump pump is immersed in water. Also, during rain storms, water may be present in the surrounding area of the pump. Caution must be used to prevent bodily injury when working near the pump:
  - a. The plug must be removed from the receptacle prior to touching, servicing or repairing the pump.
  - b. To minimize possible fatal electrical shock hazard, extreme care should be used when changing fuses. Do not stand in water while changing fuses or insert your finger into fuse socket.
5. Do not run the pump in a dry sump. If the pump is run in a dry sump, the surface temperature of the pump will rise to a high level. This high level could cause skin burns if the pump is touched and will cause serious damage to your pump.
6. Do not oil the motor. The pump housing is sealed. A high grade dielectric oil devoid of water has been put into the motor housing at the factory. Use of other oil could cause serious electric shock and/or permanent damage to the pump.
7. This pump's motor housing is filled with a dielectric lubricant at the factory for optimum motor heat transfer and lifetime lubrication of the bearings. Use of any other lubricant could cause damage and void the warranty. This lubricant is non-toxic; however, if it escapes the motor housing, it should be removed from the surface quickly by placing newspapers or other absorbent material on the water surface to soak it up, so aquatic life is undisturbed.
8. In any installation where property damage and/or personal injury might result from an inoperative or leaking pump due to power outages, discharge line blockage, or any other reason, a backup system(s) and/or alarm should be used.

## WARNING

Risk of electric shock - This pump is supplied with a grounding conductor and grounding-type attachment plug. To reduce the risk of electric shock, be certain that it is connected only to a properly grounded, grounding-type receptacle. As a safety measure, each electrical outlet should be checked with an Underwriters Laboratory Listed circuit analyzer. This will indicate if the power, neutral and ground wires are properly connected. If they are not, call a qualified licensed electrician.



## ELECTRICAL CONNECTIONS

(See Fig. 1)  **WARNING**

Your sump pump is supplied with a 3 prong electrical plug. The third prong is to ground the pump to prevent possible electric shock hazard. Do not remove the third prong from the plug. A separate branch electrical circuit is recommended. Do not use an extension cord.

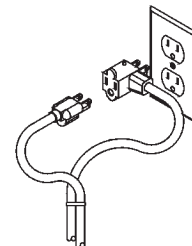
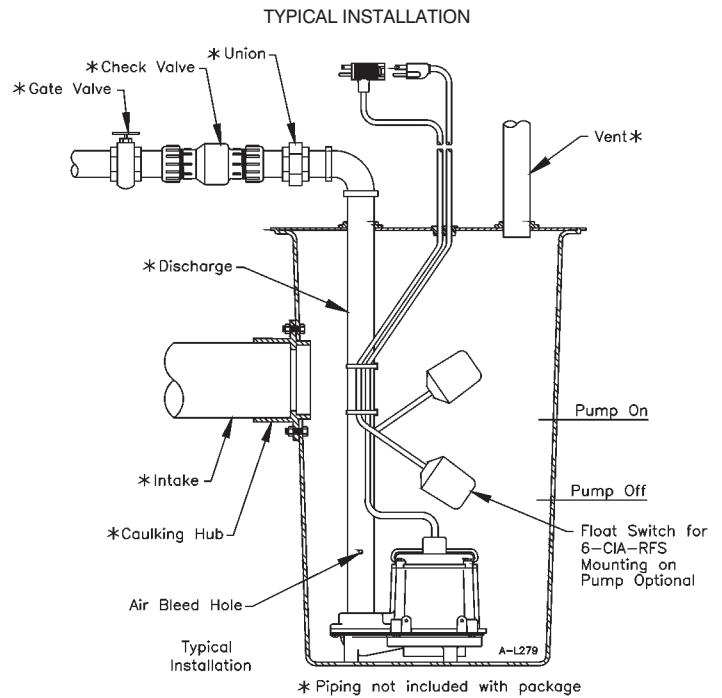


FIG. 1

## INSTALLATION (See Fig. 2)

1. Clean any debris from sump pit and set pump in center of pit. A solid bottom will prevent clogging of the pump from sand and dirt.
2. Connect discharge piping and run it to the nearest sewer or surface outlet. Use pipe joint compound at all connections. Sump pumps can be piped to discharge into the house drainage system, to a dry well, splash block or to a storm drain, depending on local plumbing codes. The discharge pipe should be as short as possible and contain as few elbows as possible. The discharge pipe should be the same diameter as the discharge size to reduce pipe friction losses. Smaller pipe will restrict capacity and reduce pump performance. The sump pump comes with 1½" female pipe thread discharge, and a 1¼" FNPT reducing bushing.

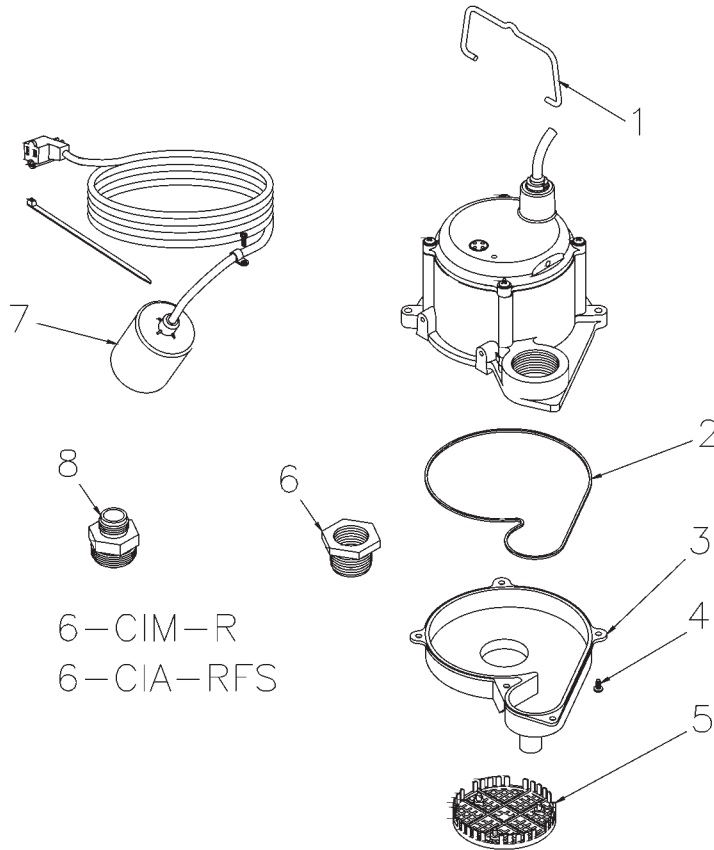
3. Always install a union in the discharge line, just above the sump pit, to allow for easy removal of the pump for cleaning or repair.
4. In situations where the piping is long, the vertical discharge is above 7 or 8 feet, or a small pit has been provided, use of a check valve is recommended to prevent backflow of water into the sump. When a check valve is used, drill a relief hole (1/8" or 3/16" diameter) in the discharge pipe. This hole should be located below the floor line between the pump discharge and the check valve. Unless such a relief hole is provided, the pump could "air lock" and will not pump water even though it will run.
5. Tape power cords to discharge line with electrician's tape. This will protect the cords from damage and will prevent the pump being pulled from the sump by its power cord.
6. TEST THE PUMP AFTER ALL CONNECTIONS HAVE BEEN MADE. Run water into sump. Do not attempt to operate the pump without water; this will damage the seals and bearings and could result in permanent damage to the pump. Fill sump to normal "on" level and allow pump to remove water to the normal "off" level (see fig. 2).
7. Place cover over sump. This cover will prevent solid debris from filling the pit, prevent odors, and guard against accidental injury.



**WARNING: Always disconnect the electrical power before touching the pump or discharge when water is present in the sump. Failure to do so can result in hazardous electrical shock.**

## TROUBLE SHOOTING INFORMATION

PROBLEM	PROBABLE CAUSES	CORRECTIVE ACTION
Pump will not shut off.  Note: Before trouble shooting automatic control, check to see that pump operates on manual control. To do this, unplug from in-line float switch plug. Plug pump power cord into wall outlet. If pump works, proceed to check switch, if not, fault is in pump or power supply.	Remote float switch obstruction.	Check float path and provide clearance.
	Pump is air locked.	Shut power off for approximately 1 minute, then restart. Repeat several times to clear air from pump. If system includes a check valve, a 3/16" hole should be drilled in discharge pipe approximately 2" above discharge connections.
	Liquid inflow matches pump capacity.	Larger pump required.
	Defective switch.	Disconnect switch, check w/ohmmeter. Open-infinite resistance, closed-zero.
	Loose connection in level control wiring.	Check control wiring.
Pump runs but does not discharge liquid.	Check valve installed backwards.	Check flow indicating arrow on check valve body to insure it is installed properly.
	Check valve stuck or plugged.	Remove check valve and inspect for proper operation.
	Lift too high for pump.	Check rating table.
	Inlet to impeller plugged.	Pull pump and clean.
	Pump is air locked.	(See corrective action above.)
Pump does not deliver rated capacity.	Lift too high for pump.	Check rated pump performance.
	Low voltage, speed too slow.	Check for proper supply voltage to make certain it corresponds to nameplate voltage.
	Impeller or discharge pipe is clogged.	Pull pump and clean. Check pipe for scale or corrosion.
	Impeller wear due to abrasives.	Replace worn impeller.
Pump cycles continually.	No check valve in long discharge pipe allowing liquid to drain back into basin.	Install a check valve in discharge line.
	Check valve leaking.	Inspect check valve for correct operation.
	Basin too small for inflow.	Install larger basin.



REPLACEMENT PARTS					
ITEM NO.	PART NO.	PARTS DESCRIPTION	6-CIM-R QTY.	6-CIA-RFS QTY.	8-CIM-R QTY.
1	108101	Handle, Pump	1	1	1
2	928004	Seal Ring	1	1	1
3	108034	Volute	1	1	1
4	909021	Screw/Washer #10-24 x 1/2"	5	5	5
5	108082	Screen, Intake	1	1	1
6	599026	Bushing Reducer	1	1	1
7	599118	RFS, Remote Float Assy.	0	1	0
8	599025	Adaptor, 3/4" Garden Hose	1	1	0

### ONE YEAR LIMITED WARRANTY

For one year from date of purchase, Little Giant Pump Company will repair this pump if defective in material or workmanship. Warranty service is available **through a nationwide network of warranty service stations** or by returning the pump prepaid to the factory. For further details, please consult the warranty statement on carton. This warranty gives you specific legal rights and you may also have other rights which vary from state to state.

#### KEEP THIS FOLDER

File this for safe keeping. It may be valuable to you for service under the term of the warranty.

Date of Purchase \_\_\_\_\_ Dealer Name \_\_\_\_\_

Serial # \_\_\_\_\_ Product # \_\_\_\_\_



P.O. Box 12010 • 3810 N. Tulsa  
Oklahoma City, Oklahoma 73112  
(405) 947-2511